



Launching The Government Empowerment Network (GEN)

The Empowerment Lab

2025

What opportunity does the Empowerment Lab seek to address?



Public servants navigate growing challenges in driving change within their organizations, demanding **innovative skills and strategies for impactful change**



Many public servants have the drive to lead reforms, but **lack access to practical, easy to access learning and mentorship in one place**

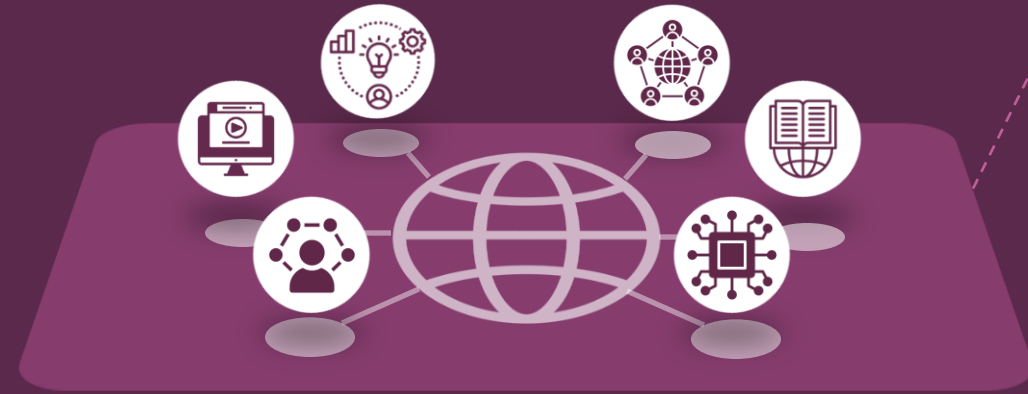
How can public servants build **knowledge, skills, and the networks necessary to lead change?**

The Empowerment Lab solution

A tech-enabled **aggregator of capacity-building programs, mentorship, and coaching** that provides public servants with inspiration, learnings, networks and a safe space to practice, debate, and refine bold ideas for reform



How the GEN experience works



1 Empowerment Lab Focus

GEN's continuous **knowledge curating, capacity-building, and collaboration** online platform

An online environment where public servants can build skills, access curated knowledge, and collaborate with peers and experts - **powered by AI**



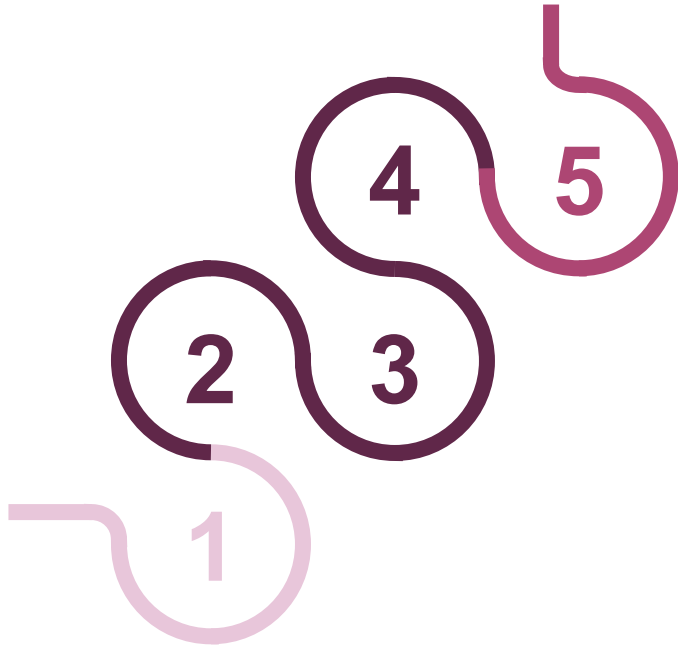
2 Incubator

In-person cohort journey for **designing and implementing locally-led reforms**

Powered by the Empowerment Lab, the incubator follows a three-stage methodology:

1. Designing Change
2. Reform Incubation
3. Leading for Change

The GEN journey takes participants through a human-centered learning path that equips them with the tools, skills, and support they need—exactly when they need them



1

Select for potential

GEN partners with ministries and local organizations to identify purpose-driven public servants with the potential to lead transformational change.

2

Learn to design for change

Champions enter a structured, immersive learning journey focused on core technical skills—systems thinking, problem framing, and solution design—enhanced by inspirational sessions and peer exchange.

3

Apply through local incubation

Champions bring real-world problems from their contexts and apply what they've learned to develop homegrown solutions. GEN's incubators, run by trusted local partners, take a problem-driven approach—offering tailored coaching and expert input to help teams iterate, test, and refine solutions and practical roadmaps.

4

Lead with purpose and influence

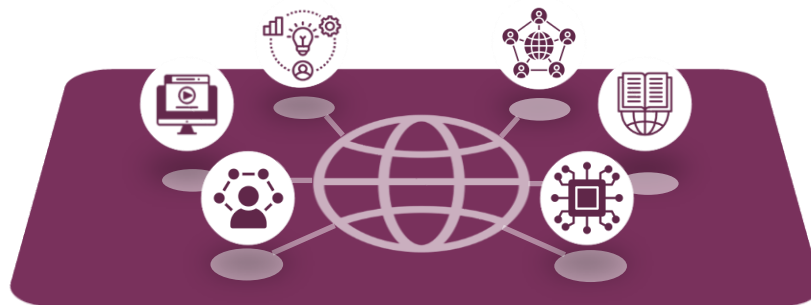
With solutions in hand, champions build the leadership muscle to bring others along—gaining buy-in from decision-makers, mobilizing teams, communicating effectively, and sustaining momentum through implementation.

5

Join a lifelong movement

Graduates become GEN Champions—continuing to access the platform, tools, and community while mentoring others, sharing insights, and helping scale impact across a growing global network.

The **Empowerment Lab** is composed of six main components



Inspirational landing

*Inspiration and
creativity page*



Capacity Builder

*Self-paced learning
modules and masterclasses*



Knowledge Hub

Resource library



Community Space

*Peer forums and cohort
spaces*



Expert Network

*Curated expert rolodex
and advisory access*



AI-assistant

Chatbot



Government Effectiveness Network